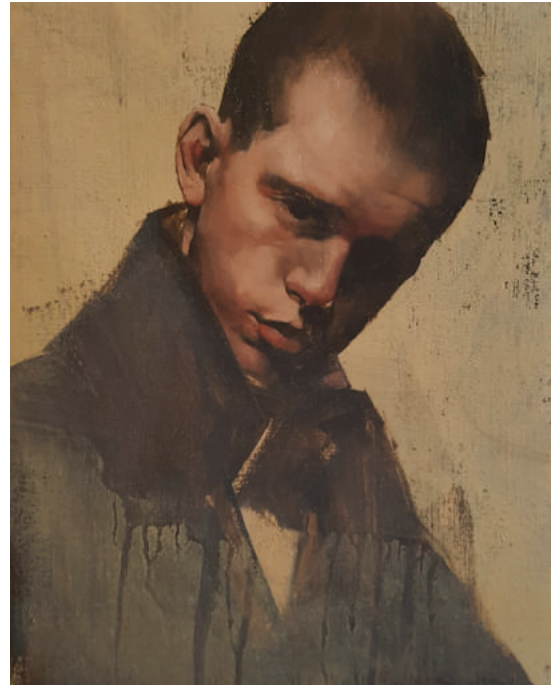




Side Street 人行道 2015
Oil on board
40.5 x 40.5 cm



Head Study 臉的研究 2017
Oil on Canvas
31 x 26 cm

克里斯多夫·湯森 (Christopher Thompson)

Christopher Thompson, 1969年生於英國的格里姆斯比 (Grimsby), 受訓於皇家藝術研究院(Royal Academy), 自他畢業一來, 作品廣為展覽, 收到許多私人收藏家的典藏, 但最知名的莫過於國家肖像館(National Portrait Gallery)。

Thompson擅長運用細膩的繪畫技巧和一貫柔和的色彩, 將人生百態盡表露在人物的一舉手、一投足、一回眸之中。Thompson的畫作往往結合了他的想像和觀察, 因此畫作總是與現實有一步之遙, 穿梭在真實與虛幻之間, 但卻又有無比的原創性。他的畫作在呈現群體與個人、明說與暗示中讓人著迷。有時作品中的人物流露出孤單與抽離感, 遺世獨立; 有時畫中人物又好似積極與觀者互動, 善於交流。不論是哪一種情緒, Thompson總是能將觀者拉入他創造的世界中。而我們與畫中人物的對話就如同畫布本身一般, 成為作品敘事的一部份。

Christopher Thompson, an English artist, was born in Grimsby in 1969 and studied at The Royal Academy. Since graduating he has exhibited extensively at home and abroad, his work featuring in many private collections and, most notably, in The National Portrait Gallery in London.

His technically accomplished paintings derive from an interest in the portrait and particularly what might be termed 'the urban portrait'. Solitary figures, predominantly male, are often situated in sparsely rendered urban spaces. Their form is dramatically revealed by artificial light; the resultant 'chiaroscuro' effect lends a brooding, emotional intensity to the scene. When framed by a theatrically simple staging, that which is initially a study in character becomes something of a narrative. The paintings have the quality of a excerpt from a film, a pause for thought, before the action continues. These figures are seen at pivotal moments of assessment or judgement.

Viewing these paintings one is put in mind of Edward Hopper's nocturnal scenes, updated to a contemporary context, peopled by a modern version of Manet's 'flâneur'. We are presented with an image of a solitary, possibly alienated, individual negotiating a path through a dimly lit and deserted modern dystopia. These characters appear to be engaged in a familiar, and timeless, personal story of 'what to do?' and 'what next?'.

克里斯多夫·湯森 (Christopher Thompson)



The Waiting Room 等候室
2017
Oil on Board
122 x 91cm



Underground 地下鐵
2015
Oil on Board
40.5 x 40.5cm

Born in 1969 in Grimsby, UK

學歷 | EDUCATION

Grimsby School of Art – Foundation Course Fine Art
Norwich School of Art – BA Honours Fine Art
Royal Academy Schools – Postgraduate Diploma Fine Art

參展經歷 | SELECTED EXHIBITIONS AND ART FAIRS

- 2016 Solo Show 'New Works', Pontone Gallery, London
Art Southhampton, New York, USA (with Shine Artists)
Art New York, New York, USA (with Shine Artists)
Pontone Gallery Opening Exhibition
London Art Fair 2016, London, UK (with Shine Artists)
- 2015 Context Art Miami, Miami, USA (with Shine Artists)
Art Taipei, Taipei City, Taiwan (with Shine Artists)
Art Silicon Valley San Francisco, USA (with Shine Artists)
Group Show 'British & Italian Painting' | London 2015', Shine Artists, London, UK
Art Southhampton, New York, USA (with Shine Artists)
345 Broome Street New York 2015 with Shine Artists
Solo Show 'Somewhere: A Moment's Thought', Shine Artists, London
A special exhibition 'Armory week New York 2015', Shine Artists, NY, USA
Group Show 'Preview | London 2015', Shine Artists, London, UK
London Art Fair, London, UK
- 2014 Four Figurative Painters, Albermarle Gallery, London
Art Southhampton, New York
Art Silicon Valley, San Francisco, USA
KIAF 2014, Seoul, South Korea
- 2013 Art Southhampton, New York
Art Copenhagen, Copenhagen, Denmark
Art Busan, Busan, South Korea
Figurative Collective, Albermarle Gallery, London, UK
KIAF 2013, Seoul, South Korea
- 2012 Aquatous, Albermarle Gallery, London
Self-Portrait Show, Eleanor Ettinger Gallery, New York
In Plain Sight, Art Moorhouse, London
Art Busan, Busan, South Korea
Art Gwangju, Gwangju, South Korea
KIAF 2012, Seoul, South Korea
Doors Art Fair, Seoul, South Korea
- 2011 Nude, Albermarle Gallery, London
British Figurative Art, Eleanor Ettinger Gallery, New York
Ruth Borchard Self-Portrait Competition, Kings Place, London
Art Gwanju, Gwanju, South Korea
- 2010 Four Figurative Painters, Albermarle Gallery, London
KIAF 2010, Seoul, South Korea
London Charity Group Exhibition, Albermarle Gallery, London
New York Self Portraits, Eleanor Ettinger Gallery, New York
- 2009 London Group Exhibition, Albermarle Gallery, London
London Royal Society of Portrait Painters, Mall Galleries, London
- 2008 Solo Exhibition, Albemarle Gallery, London
Summer Show, Albemarle Gallery, London
- 2007 Aqua, Galleria d'Arte Contemporanea, Modena, Italy
Winter Show, Albemarle Gallery, London
Form London, Olympia, London
Summer Show, Albemarle Gallery, London
- 2006 10th Anniversary Exhibition, Albemarle Gallery, London
Solo Exhibition, Albemarle Gallery, London
Human Art, Catania Arte Fiera, Italy
- 2005 Nuova Figurazione Britannica, Forni Gallery, Bologna, Italy
What is Realism, Albemarle Gallery, London
New York British Figurative Art, Eleanor Ettinger Gallery, New York
London Garrick Milne Portrait Prize, Christies, London

作品典藏 | COLLECTIONS

National Portrait Gallery, London, UK
Ruth Borchard Self Portrait Collection